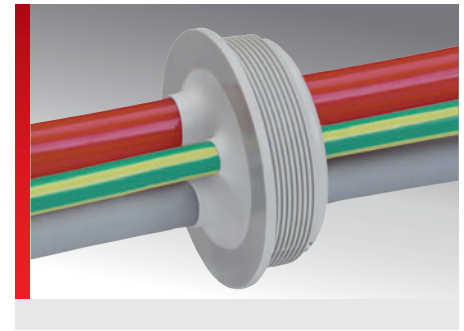
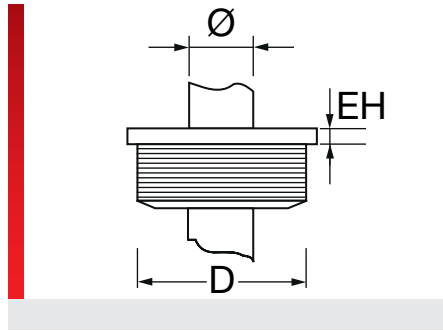


Cable entry membranes KDM

Cable entry membranes KDM

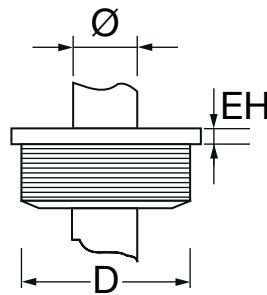


- Easy no-tool push-fit installation
- Extremely high tightness IP66
- Very flexible diameter ranges (more than one cable option)
- Fits on standard cut-outs of M16 to M32

	-40.00 – 176.00 °F
	Enclosure: Polyethylene Seal: TPE
	for plate thicken. of 2.0 mm (0.08 in) IP 66 for plate thickness of 1.5-2.0 mm (0.06 – 0.08 in) IP 65

142

Cable entry membranes, type KDM/F







PRODUCT INFORMATION

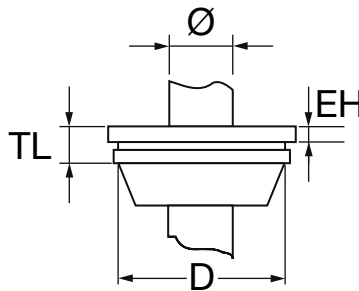
KDM/F is a self-extinguishing cable entry system for cables without plug connectors. The various sizes fit to metrical cut-outs from M16 to M32.

- Easy no-tool push-fit installation
- Extremely high tightness IP66
- Very flexible diameter ranges (more than one cable option)
- Self-extinguishing material per UL94 V2
- Fits on standard cut-outs of M16 to M32

SPECIFICATIONS

	-40.00 – 176.00 °F
	Enclosure: Polyethylene Seal: TPE
	V2
	from plate thickn. of 2.0 mm (0.08 in) IP 66 for plate thickness of 1.5-2.0 mm (0.06 – 0.08 in) IP 65

[illegible]



- Easy no-tool push-fit installation
- Extremely high tightness IP66/67
- Fits on standard cut-outs of M12 to M50
- High temperature stability



IP

RoHS

RoHS

Type	Part number	Color	For Ø inch	EH inch	TL inch	D inch	Pack qty.
KDM/G M12	87401020	Gray	0.16 – 0.28	0.28	0.51	0.48	50.00
KDM/G M16	87401022	Gray	0.20 – 0.39	0.28	0.71	0.64	50.00
KDM/G M20	87401024	Gray	0.31 – 0.51	0.28	0.79	0.80	50.00
KDM/G M25	87401026	Gray	0.43 – 0.67	0.28	0.85	1.00	50.00
KDM/G M32	87401028	Gray	0.59 – 0.83	0.28	0.98	1.28	50.00
KDM/G M40	87401030	Gray	0.75 – 1.06	0.31	1.18	1.59	25.00
KDM/G M50	87401032	Gray	1.10 – 1.38	0.37	1.38	1.99	10.00